



Quality Built Since 1973

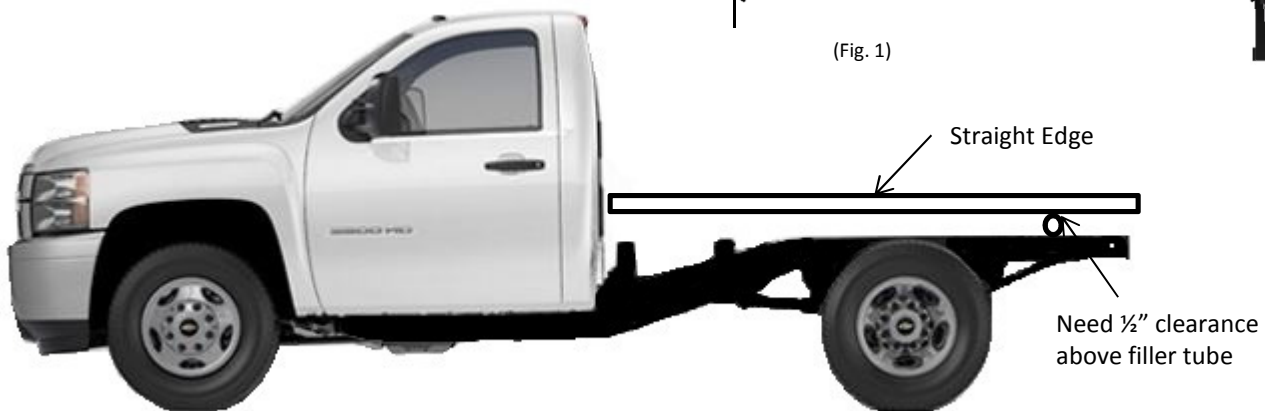
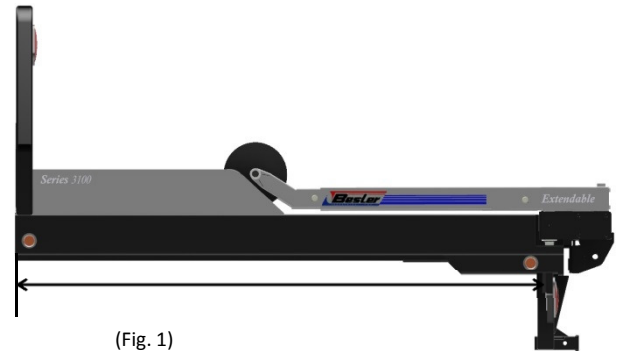
INSTALLATION AND SETUP MANUAL

**3000 SERIES BALE LOADER
12 Volt Electric over Hydraulic**

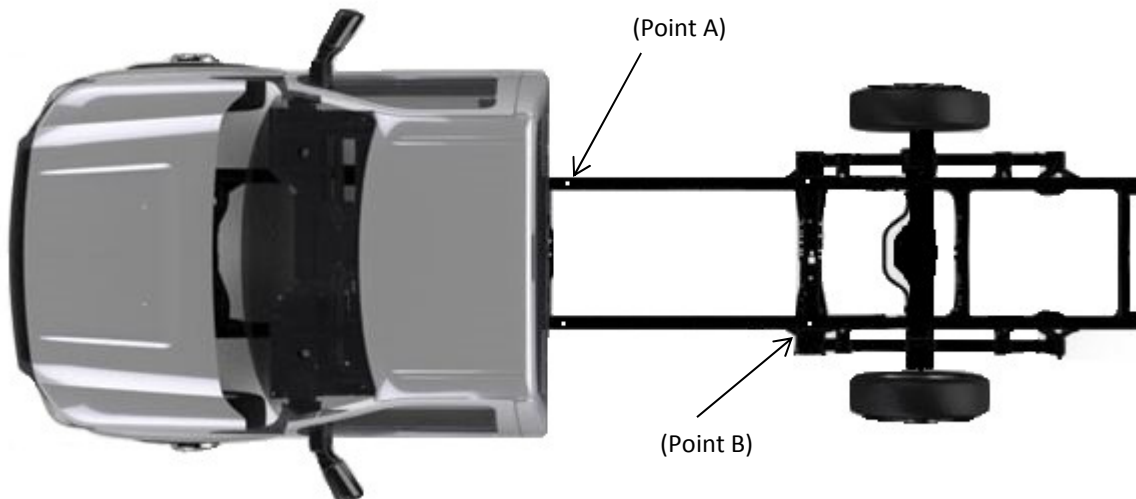


MODEL 3000 FLAT BED BALE LOADER INSTALLATION INSTRUCTIONS

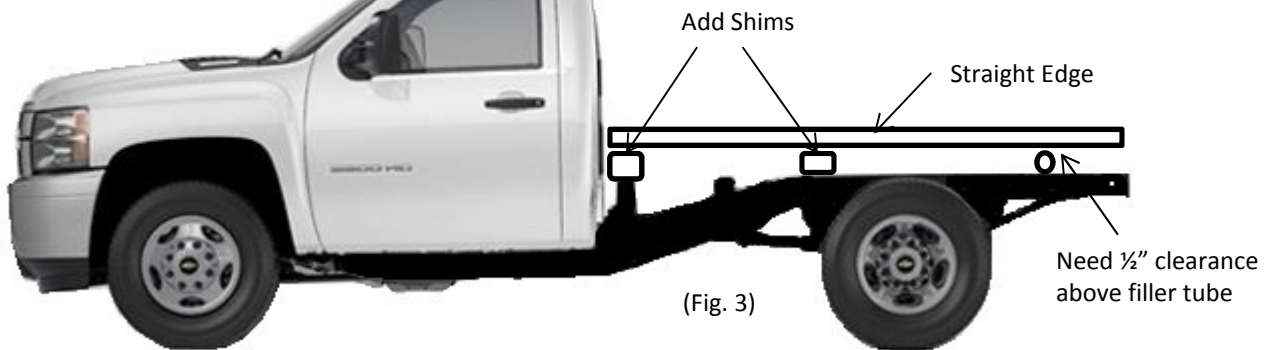
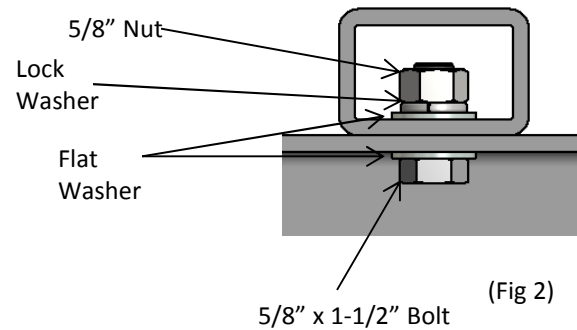
- 1) Remove box from truck.
- 2) Cut truck frame to length. Measure from front of bed to backside of license plate panel. (Fig 1)(Save removed pieces for future Replacement)
- 3) Measure fuel filler tube if it is above the frame and make sure there is $\frac{1}{2}$ " clearance above it.
- 4) Lay Straight edge along and parallel to truck frame rail



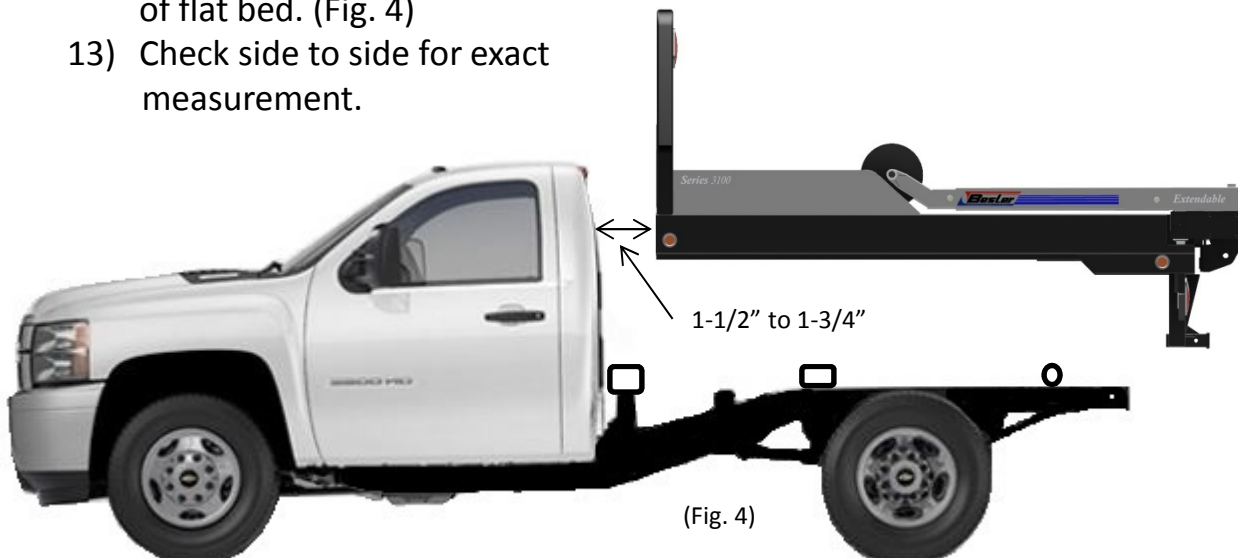
- 5) Center 2-1/2" x 3" x 38-1/2" tube at the front set of existing box mounting holes. (Point A)
NOTE: If truck frame rails are over 38" wide, 2-1/2" x 3" tubes must be provided by the installer.



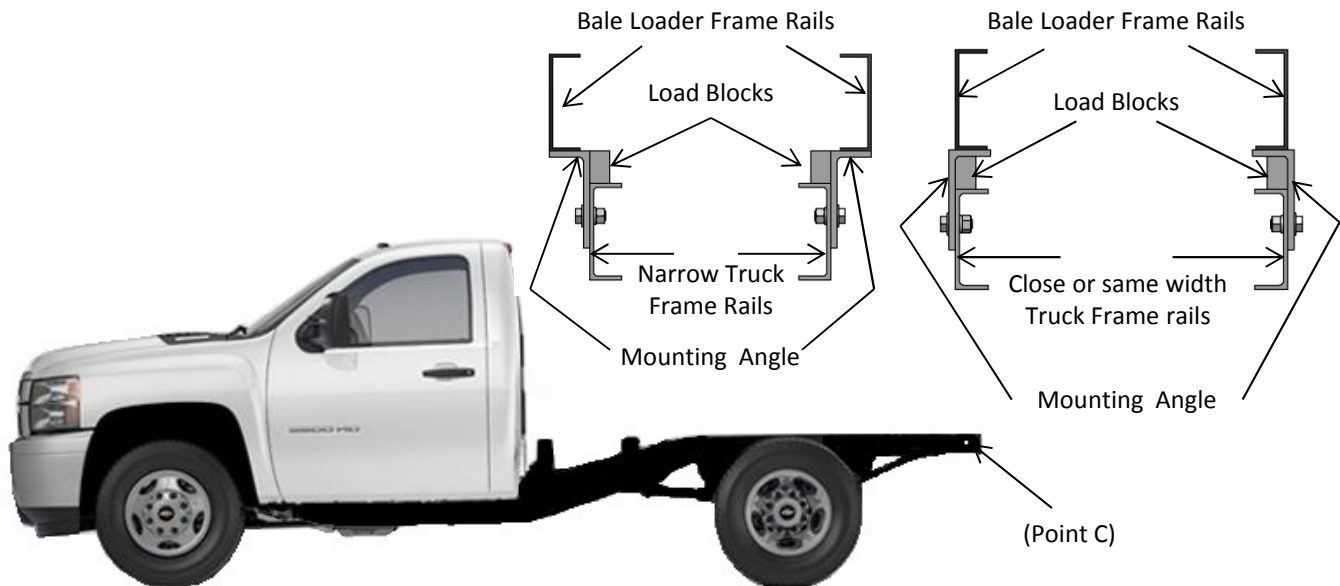
- 6) Drill tube to match existing holes in truck frame (5/8" Diameter)
- 7) Repeat Steps 5 & 6 for the 2" x 3" x 38-1/2" for (Point B)
- 8) Bolt tubes to truck frame rails using 5/8" x 1-1/2" bolts, lockwashers, washer and nuts. (Fig 2)
- 9) Add Shims to the top of tubes to get the straight edge parallel and level to truck frame. (Fig. 3)



- 10) Double check clearance for fuel filler tube.
- 11) Weld Shims all around on top of crosstubes
NOTE: All welding should be done by a qualified professional.
- 12) Center Flat bed on truck leaving 1-1/2" to 1-3/4" from back of cab to front of flat bed. (Fig. 4)
- 13) Check side to side for exact measurement.



- 14) Double check all measurements and clearance
- Check cab to front of bed
 - Fuel Filler Clearance
 - Hydraulic Pan to truck frame
- 15) Bolt Angles to existing holes in truck frame (Point C)



- 16) Cut load blocks to length and clamp to mounting angle. Load blocks will carry all of the weight of flat bed and cargo when properly installed.
- 17) Weld Load Blocks to mounting angles, weld angles to flat bed rails.
CAUTION: DO NOT WELD ANY PART OF THE FLAT BED TO THE TRUCK FRAME RAILS.
- 18) Weld front tubes and shims to flat bed rails.



3000 Series Bale Loader Lights

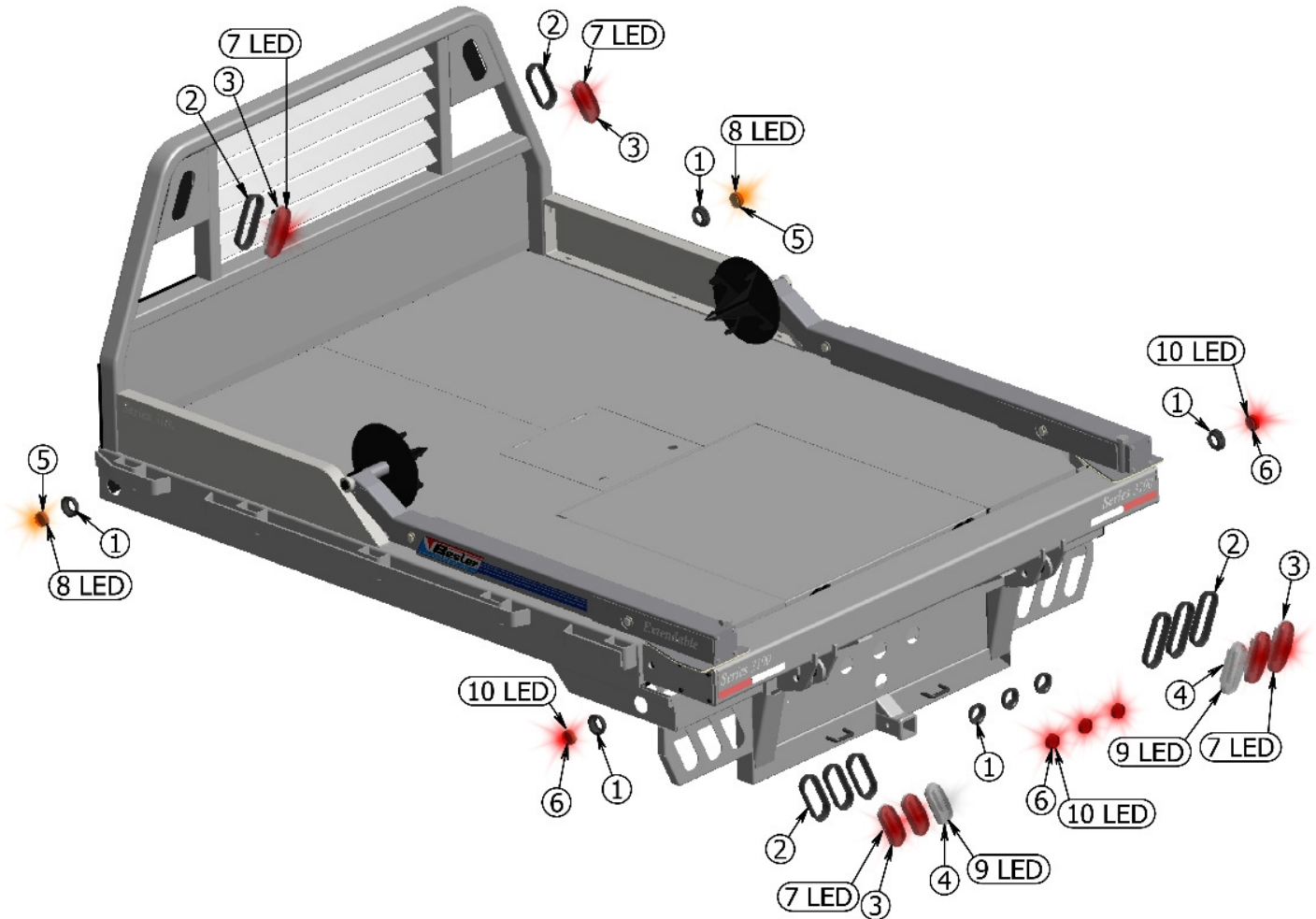
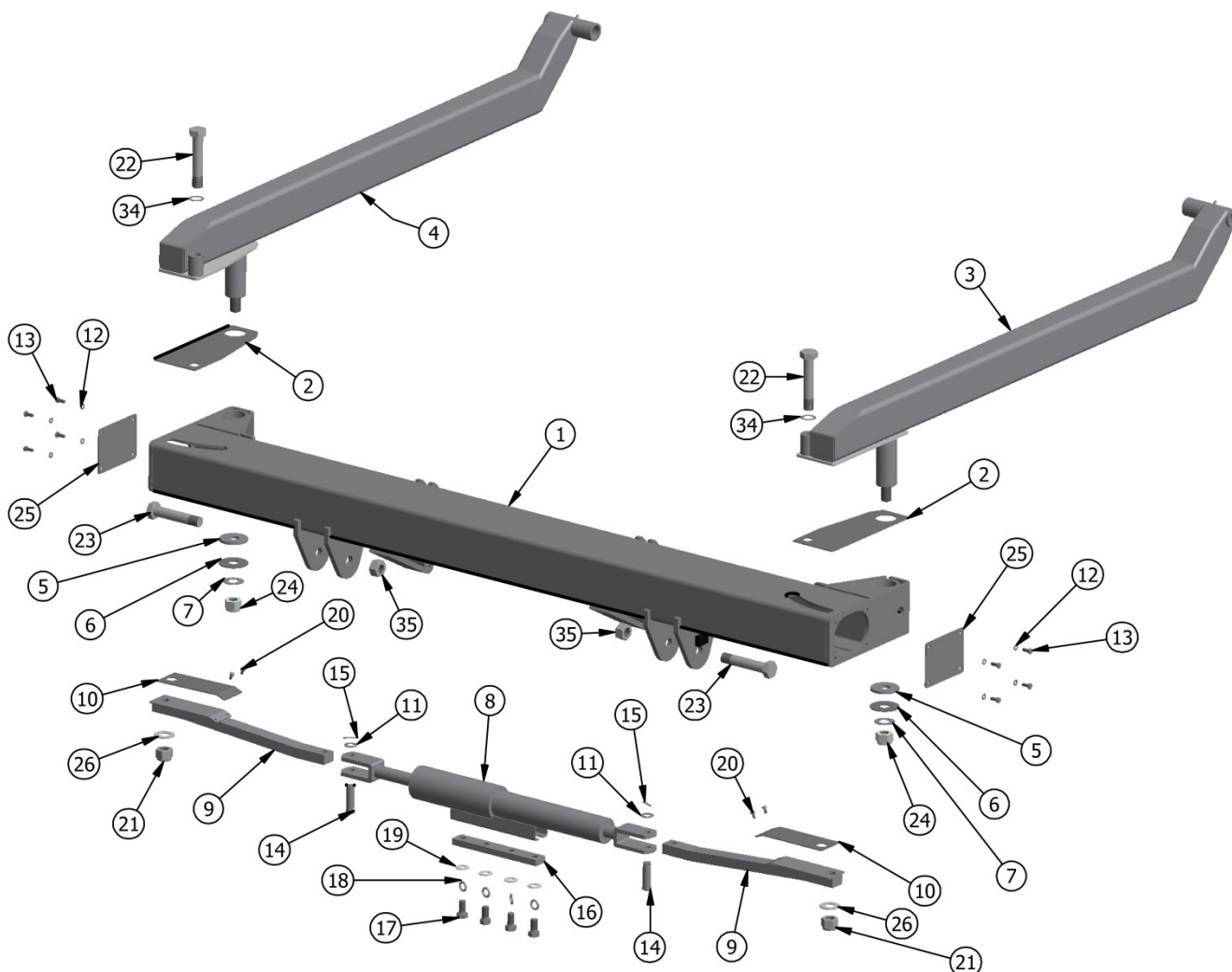


TABLE			
ITEM	PART #	DESCRIPTION	QTY
1	90393	Small Round Grommet	7
2	10794	Oval Grommet	8
3	12103	Red Oval Light	6
4	90254	White Oval Light	2
5	10795	Amber Round Light	2
8	10793	Red Round Light	5
7	90727	Red Oval LED (OPTIONAL)	6
8	90726	Amber Round LED (OPTIONAL)	2
9	90725	White Oval LED (OPTIONAL)	2
10	90732	Red Oval LED (OPTIONAL)	5



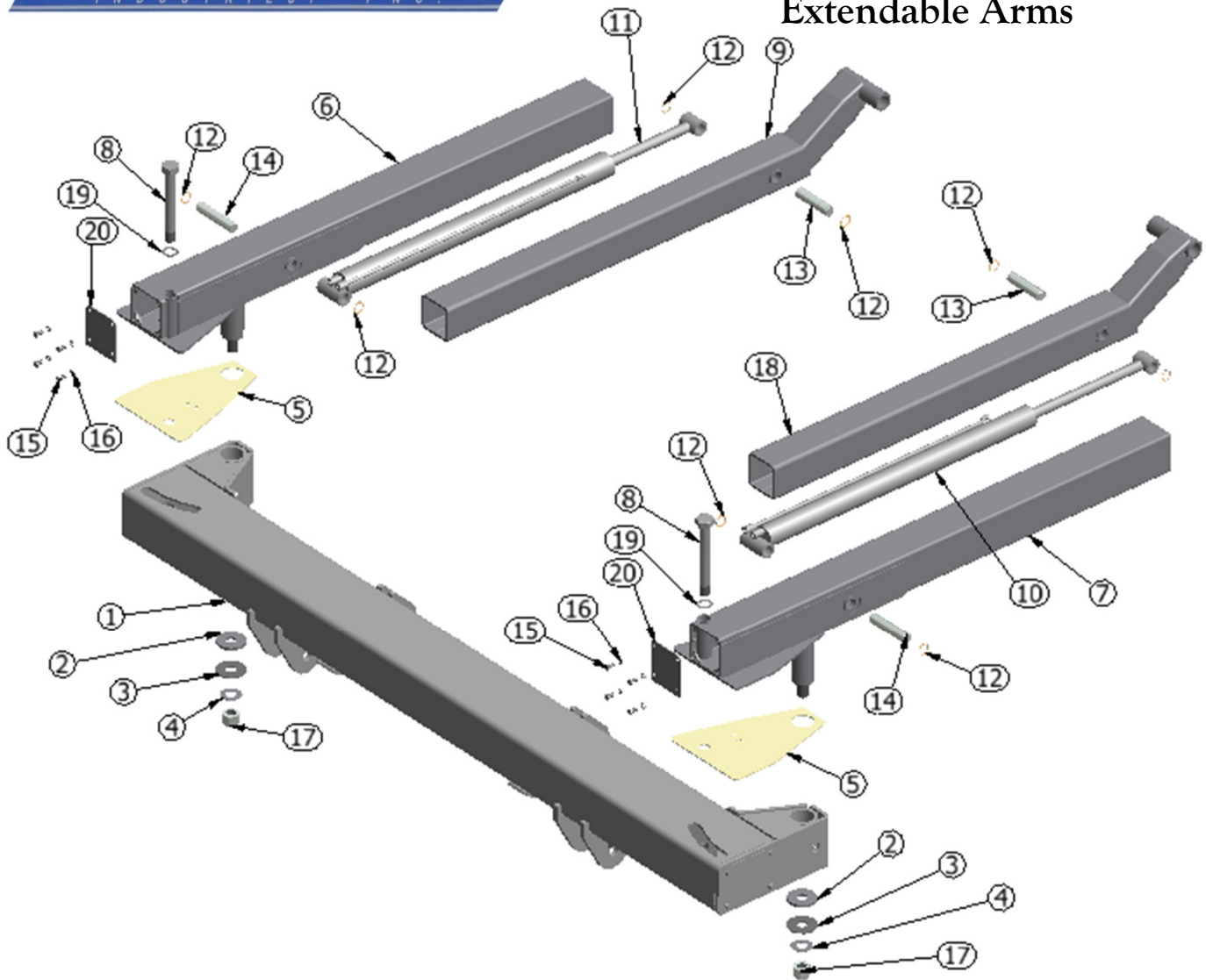
3000 Series Bale Loader Cross Arm Breakdown



PARTS LIST				PARTS LIST			
ITEM	PART #	DESCRIPTION	QTY	ITEM	PART #	DESCRIPTION	QTY
1	10501	Cross Arm Frame	1	15	90105	Cotter Pin	2
2	10514	Nylon Wear Plate	2	16	10535	Plate Threaded 5-8 UNF	1
3	10502	Loader Arm Right	1	17	90122	5/8" x 1-1/4" Bolt	4
4	10503	Loader Arm Left	1	18	90123	5/8" Lock Washer	4
5	90404	2-3/4" x 1" Washer	2	19	90124	5/8" Flat Washer	4
6	10717	Nylon Spacer	2	20	90227	1/4" x 1/2" Bolt	4
7	90126	Shim 18 Gauge x 1 ID	2	21	90154	1" Nylock Nut	2
8	10518	Cylinder - Master Slave	1	22	90176	1" x 7" ALT. to 5-1/4" Bolt	2
9	10519	Cylinder Extension Bar	2	23	90177	1" x 7" ALT. to 5-1/8" Bolt	2
10	13591	R - Nylon Wear Plate	2	24	90108	1" Nylock Nut	2
11	10516	Machine Bushing	2	25	10522	Cross Arm End Cap	1
12	90106	5/16" Lock Washer	1	26	90112	1" Washer	2
13	90107	5/16" x 3/4" Bolt	1	34	10506	Machine Bushing	2
14	90195	Clevis Pin	2	35	90111	1in Deformed Nut	2



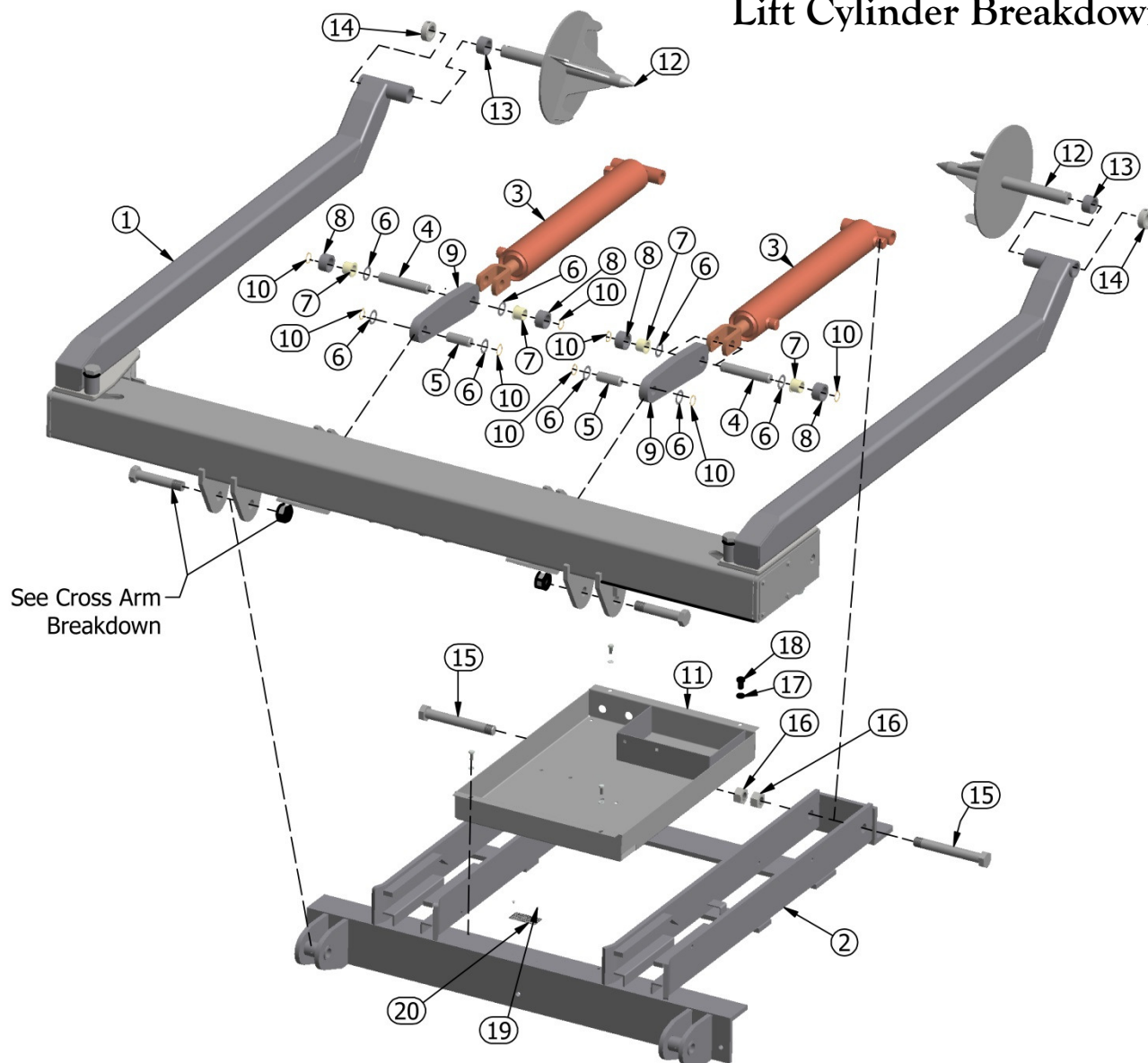
3000 Series Bale Loader Cross Arm Breakdown Extendable Arms



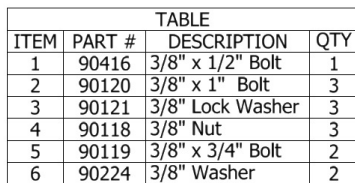
PARTS LIST				PARTS LIST			
ITEM	PART #	DESCRIPTION	QTY	ITEM	PART #	DESCRIPTION	QTY
1	10501	Cross Arm Frame	1	11	13589	Extendable Arm Cyl. LH	2
2	90404	2-3/4 x 1 washer	2	12	10943	1in Snap Ring	8
3	10717	Nylon Spacer	2	13	93028	Pin Cyl Ram	2
4	90126	Shim 18 Gauge x 1 ID	2	14	93029	Pin Cyl Base	2
5	13591	Nylon Wear Plate	2	15	90292	5/16" x 5/8" SS Bolt	8
6	13574	Arm Assy Left	1	16	90293	5/16" SS Lock Washer	8
7	13598	Arm Assy Right	1	17	90108	1" Nylock Nut	4
8	13579	1' x 9" ALT. to 7-1/4" Bolt	2	18	13653	Extension Tube Right	1
9	13596	Extension Tube Left	1	19	10506	Machine Bushing	2
10	13588	Extendable Arm Cyl. RH	2	20	94030	End Cap	2



3000 Series Bale Loader Lift Cylinder Breakdown



PARTS LIST				PARTS LIST			
ITEM	PART #	DESCRIPTION	QTY	ITEM	PART #	DESCRIPTION	QTY
1	13626	Cross Arm Assembly	1	11	10523	Electric Pan	1
2	10500	3000 elec Main Frame	1	12	10504	Spinner	2
3	10512	Main Frame Cylinder	2	13	10505	Spacer 1" x 1-1/4" x 1-3/4"	2
4	10509	Snap ring pin	2	14	90102	Spinner lock collar	2
5	10511	Snap ring pin short	2	15	90117	1" x 9-1/2" ALT. to 7-1/2" Bolt	2
6	10506	Machine Bushing	8	16	90111	1in Deformed Nut	2
7	10507	Flange Nylon Bushing	4	17	90106	5/16"Lock Washer	4
8	10508	Roller	4	18	90107	5/16" x 3/4" Bolt	4
9	10510	Oval Bar	2	19	10292	1/4" Drive rivet	2
10	10943	1" Snap Ring	8	20	10898	Serial Number Plate	1



Exploded view diagram of the 10523 unit. The diagram shows the following components and their assembly sequence:

- 90701**: Main housing unit.
- 10527**: Motor assembly.
- 10517**: Cylindrical component (pump or actuator).
- 90704**: Solenoid valve assembly.
- 10523**: Base plate.

Assembly sequence indicated by numbers in circles:

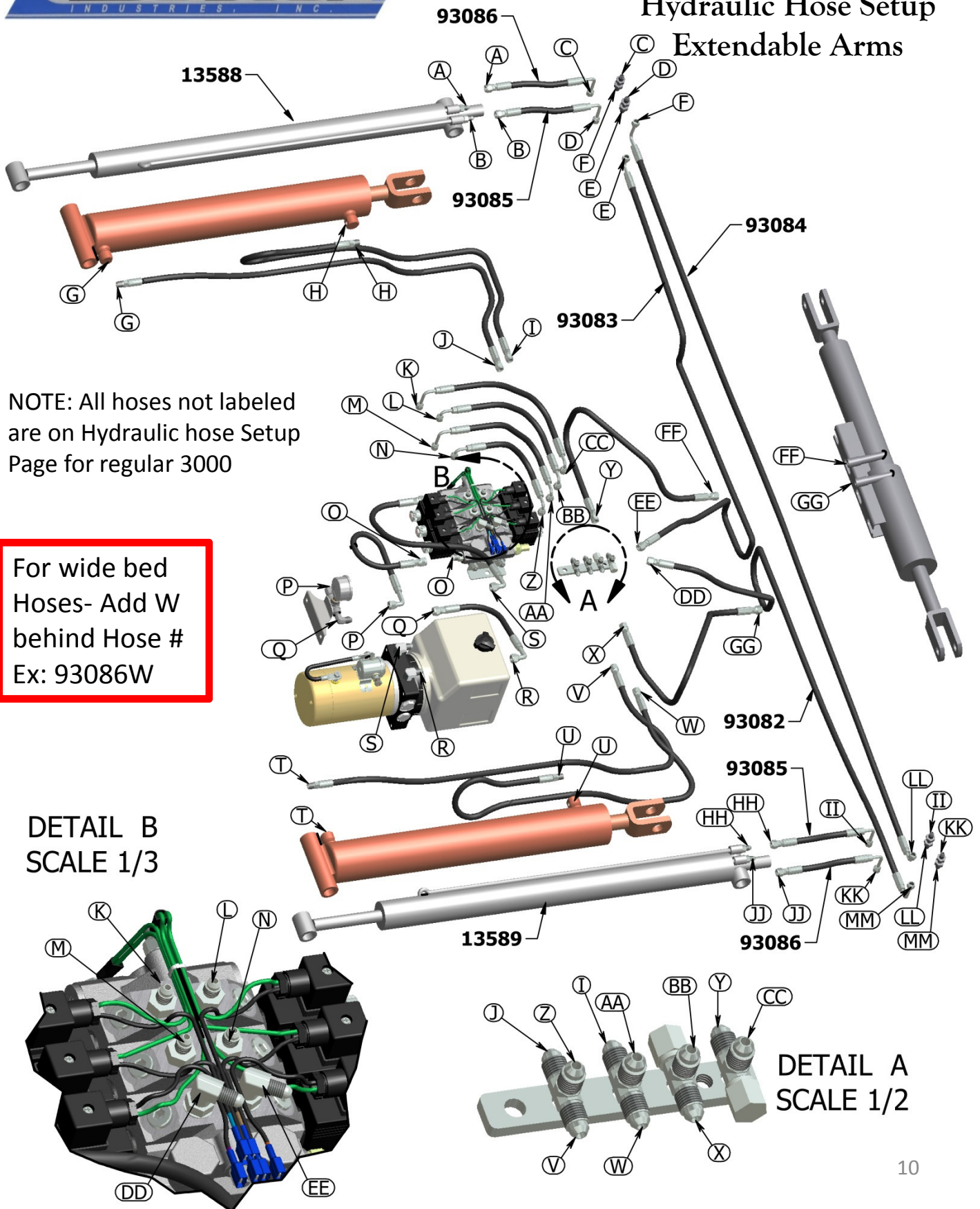
1. Base plate (10523)
2. Mounting pins
3. Solenoid valve assembly (90704)
4. Mounting pins
5. Mounting pins
6. Mounting pins

Parts List Table:

QTY	Part Number	Description
1	10523	Base plate
3	90704	Solenoid valve assembly
3	10517	Cylindrical component
3	10527	Motor assembly
2	90701	Main housing unit
2	10523	Base plate



3000 Series Bale Loader Hydraulic Hose Setup Extendable Arms





3000 Series Bale Loader Hydraulic Fittings for Both 3000 & Extendable

Colored Balloons are
Extendable Arms Only

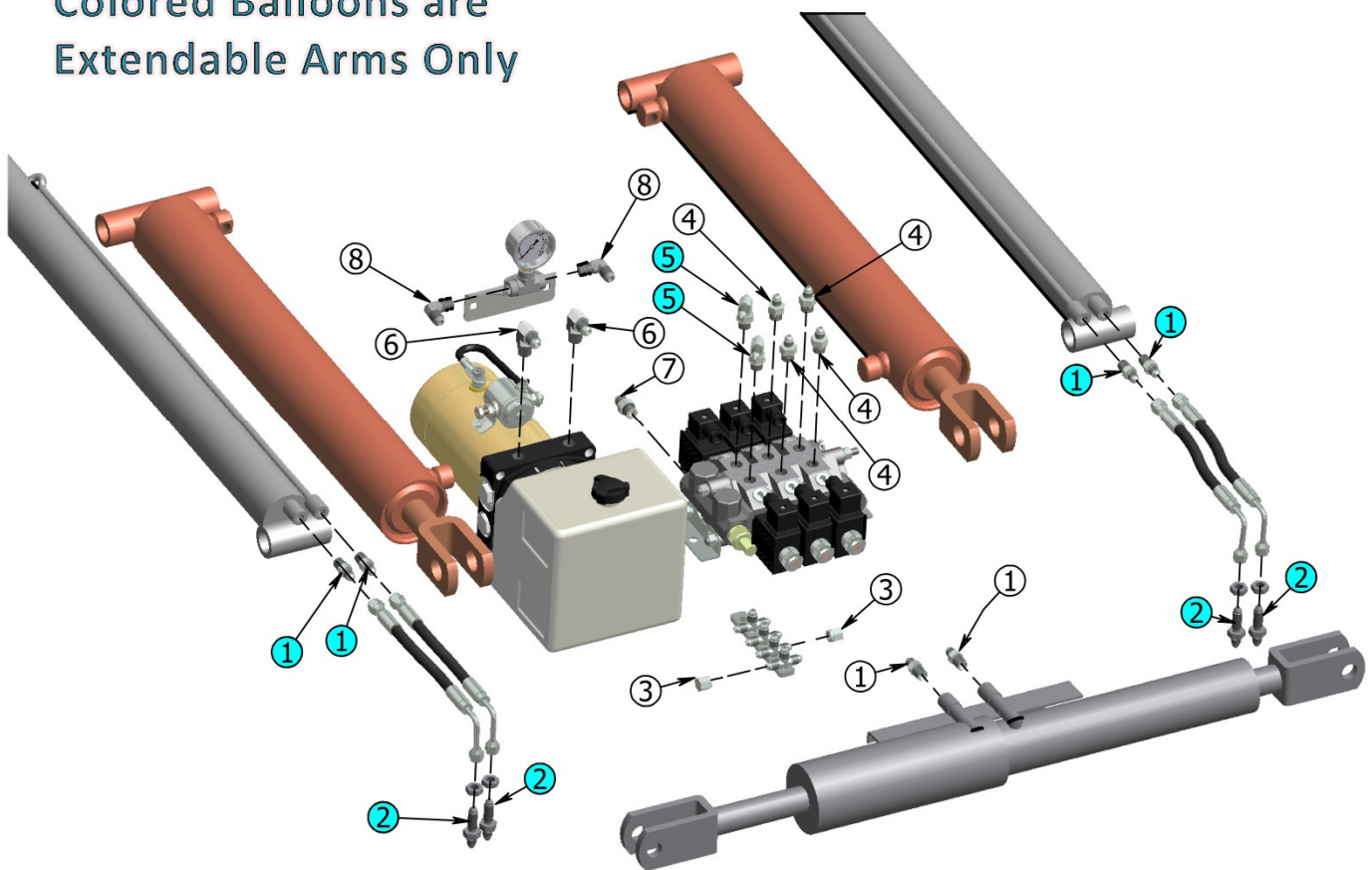
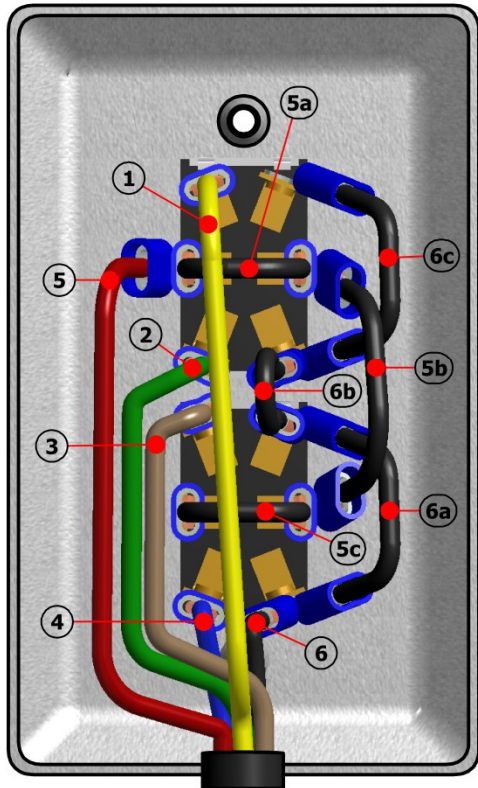


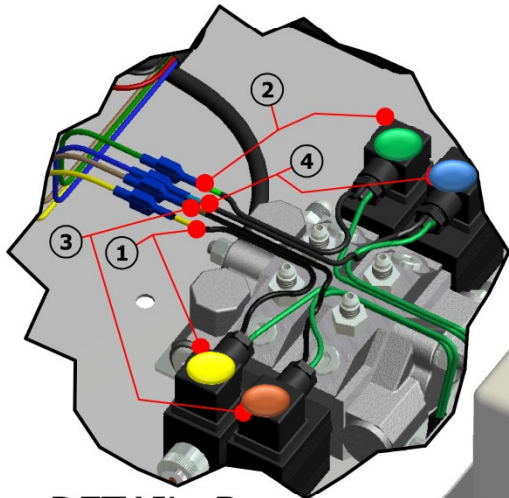
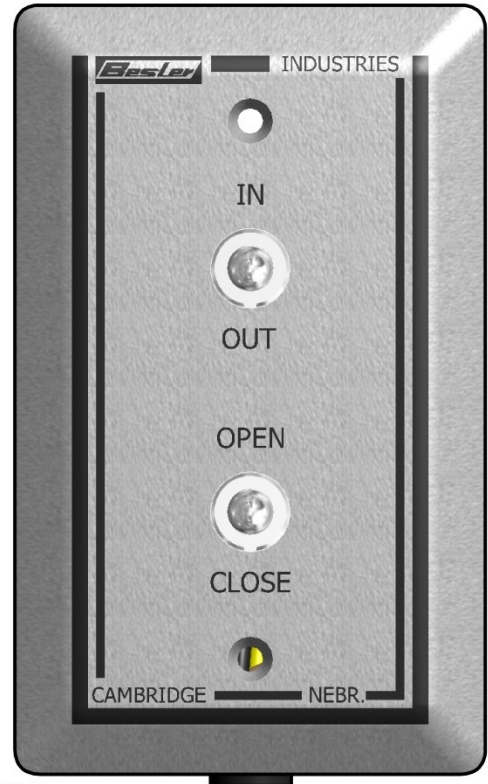
TABLE				
ITEM	PART #	DESCRIPTION	QTY - 3000	QTY - Extendable
1	90276	Male JIC Fitting	2	6
2	94007	Bulkhead Union	0	4
3	90281	Female Cap	2	2
4	90472	O-ring Fitting	4	4
5	93081	90 O-ring elbow	0	2
6	90470	90 O-ring elbow	2	2
7	90278	O-ring Fitting	1	1
8	17388	90 Elbow	2	2



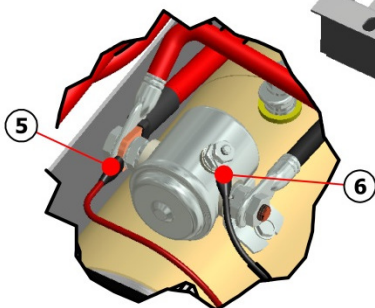
3000 Series Bale Loader Controller Cord



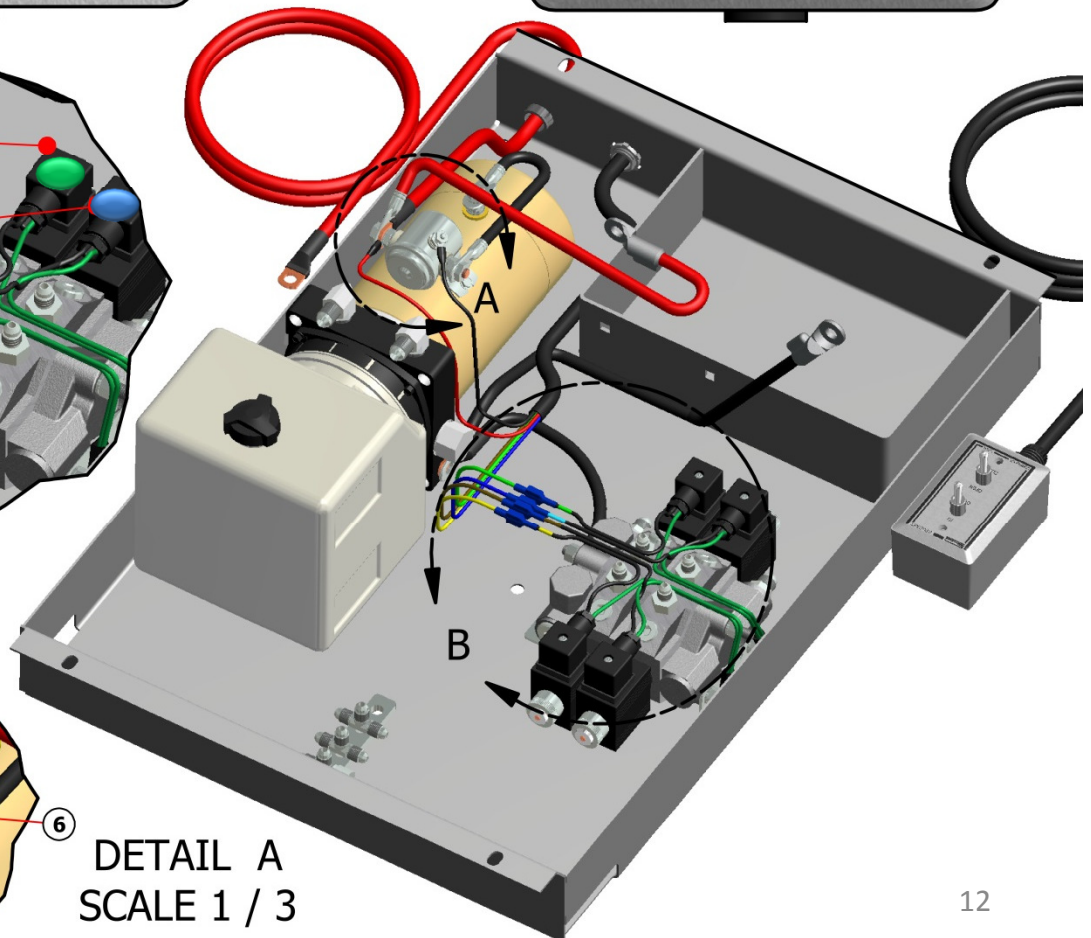
- 1. Yellow Wire (IN)
- 2. Green Wire (OUT)
- 3. Brown Wire (OPEN)
- 4. Blue Wire (CLOSE)
- 5. Red Wire (12v Power)
- 5a. Black Wire (12v Jumper)
- 5b. Black Wire (12v Jumper)
- 5c. Black Wire (12v Jumper)
- 6. Black Wire (Ground)
- 6a. Black Wire (Ground Jumper)
- 6b. Black Wire (Ground Jumper)
- 6c. Black Wire (Ground Jumper)



DETAIL B
SCALE 1/3.6



DETAIL A
SCALE 1 / 3

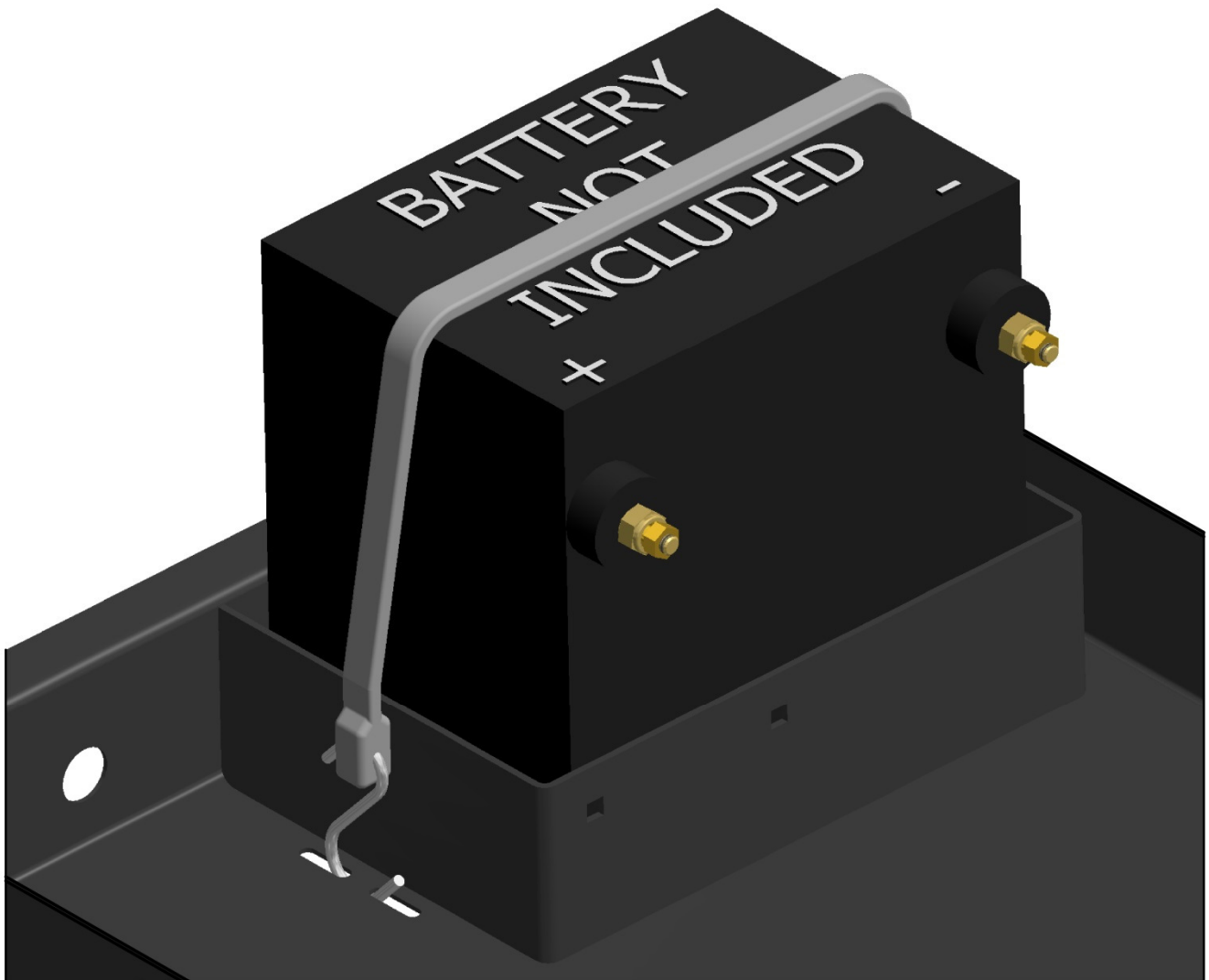




Battery Installation



Make sure the Battery is strapped down before operation of the bale bed. Bouncing through fields could possibly make battery jump out and cause terminals to short out. We recommend a medium duty 19in. Tarp strap. Depending on how old the bed is there will either be hook on either side of battery box or cutout slots as in image below to hook the strap to.



BESLER INDUSTRIES, INC.

BESLER BALE BED & BALE UNROLLER TWO YEAR LIMITED WARRANTY

STATEMENT OF WARRANTY

1) WHAT IS COVERED BY THIS WARRANTY:

Besler Industries, Inc. warrants to the original retail purchaser only, that all equipment, parts and accessories which it manufactures are free from defects in material or workmanship under normal use, service, proper setup and adjustment. The duration of this warranty is two (2) years from the date of delivery with some limitations on specific parts mentioned below.

This warranty is limited to repair or replacement of part or parts, to the original purchaser, found by the manufacturer, through the authorized selling dealer, to be defective in material or workmanship in the warranty period. This warranty shall be effective only when the part or parts have been authorized for return or replacement by Besler Industries, Inc., and returned prepaid by the dealer or purchaser to Besler Industries, Inc. Consult your dealer before removing any parts or making repair. For Warranty claim, notify the selling dealer.

2) WHAT IS NOT COVERED BY THIS WARRANTY:

Besler Industries, Inc., does not warranty: (a) damage caused by use for purposes other than those for which it was designed: (b) repairs made by unauthorized persons: (c) damage caused by neglect, abuse, abnormal use, improper or unreasonable use, accident, or misuse: (d) damages caused by unauthorized attachments, alterations, or modifications: (e) damage caused by improper service, setup or adjustments: (f) Besler equipment which has had a serial numbers removed or made illegible: (g) normal wear (h) transportation to and from authorized dealer's place of business or Besler Industries, Inc.

3) LIMITATIONS TO WARRANTY

The following parts are covered under the original warranty for the specified time indicated by each item.

Two (2) Years from time of purchase:

Structure and welds

One (1) Year from time of purchase:

Cylinders, Valves, Pump, Hydraulic Hoses, Electric Motor

Warning: Low Voltage and /or running motor continuously for excessive periods of time may result in motor damage. This is considered misuse and will not be covered by the manufacturer.

Six (6) Months from time of purchase:

Paint, Wear Plates, Toggle Switches

*Warranty on merchandise not of Besler Industries, Inc., supplied in piece or in component assemblies will be dependent on the manufactures warranty, some limitations may apply.

4) DISCLAIMER OF WARRANTY:

The foregoing warranties are in lieu of all other warranties of merchantability and fitness for a particular purpose. Any implied warranty of merchantability or fitness for a particular purpose is limited to the duration of this limited warranty. This warranty gives you specific legal rights, and you may also have other rights which vary from state to state.

5) Besler Industries, Inc. reserves the right to improve products through modifications and changes in design or material without being obligated to incorporate such changes in prior manufacture.

6) WARRANTY REGISTRATION:

The Warranty registration card must be completed and forwarded to Besler Industries, Inc., Box B, Cambridge, NE 69022. Within 10 days following date of purchase. Warranty will not be granted unless a warranty card is on file at Besler Industries, Inc. The Date of purchase constitutes delivery.